



JUNE 2024 EDITION

NGR
ACCOUNTING
NGR Accounting Pty Limited
Phone 02 9011 6669
Email info@nrgaccounting.com.au

INSIDE

The essential 30 June guide.....	1
For you	1
For your business	3
ATO fires warning shot on trust distributions	5
5 million+ struggle with mortgage payments.....	6
What's changing on 1 July 2024? ...	6
Quote of the month	6
Changes coming to XERO	7

Note: The material and contents provided in this publication are informative in nature only. It is not intended to be advice and you should not act specifically on the basis of this information alone. If expert assistance is required, professional advice should be obtained.

Publication date: 31 May 2024

The essential 30 June guide

The end of the financial year is fast approaching. We outline the areas at risk of increased ATO scrutiny and the opportunities to maximise your deductions.

For you

Opportunities

Take advantage of the 1 July 2024 tax cuts by bringing forward your deductible expenses into 2023-24. Prepay your deductible expenses where possible, make any deductible superannuation contributions, and plan any philanthropic gifts to utilise the higher tax rate.

Bolstering superannuation

If growing your superannuation is a strategy you are pursuing, and your total superannuation balance allows it, you could make a one-off deductible contribution to your superannuation if you have not used your \$27,500 cap. This cap includes superannuation guarantee paid by your employer, amounts you have salary sacrificed into super, and any amounts you have contributed personally that will be claimed as a tax deduction.

And, if your superannuation balance on 30 June 2023 was below \$500,000 you might be able to access any unused concessional cap amounts from the last five years in 2023-24 as a personal contribution. For example, if you were \$8,000 under the cap in each of the last 5 years, you could contribute an additional \$40,000 and take the tax deduction in this financial year at the higher personal tax rate. *Continued over...*

Continued from page 1...

To make a deductible contribution to your superannuation, you need to be aged under 75, lodge a [notice of intent to claim a deduction in the approved form](#) (check with your superannuation fund), and get an acknowledgement from your fund before you lodge your tax return. For those aged between 67 and 75, you can only make a personal contribution to super if you meet the work test (i.e., work at least 40 hours during a consecutive 30-day period in the income year, although some special exemptions might apply).

And, if your spouse's assessable income is less than \$37,000 and you both meet the eligibility criteria, you could contribute to their superannuation and claim a \$540 tax offset.

If you are likely to face a tax bill this year, for example, you made a capital gain on shares or property you sold, then making a larger personal superannuation contribution might help to offset the tax you owe.

Charitable donations

When you donate money (or sometimes property) to a registered deductible gift recipient (DGR), you can claim amounts over \$2 as a tax deduction. The more tax you pay, the more valuable the tax deductible donation is to you. For example, a \$10,000 donation to a DGR can create a \$3,250 deduction for someone earning up to \$120,000 but \$4,500 to someone earning \$180,000 or more (excluding Medicare levy).

To be deductible, the donation must be a gift and not in exchange for something. Special rules apply for amounts relating to charity auctions and fundraising events run by a DGR.

Philanthropic giving can be undertaken in a number of different ways. Rather than providing gifts to a specific charity, it might be worth exploring the option of giving to a [public ancillary fund](#) or setting up a private ancillary fund. Donations made to these funds can often qualify for an immediate deduction, with the fund then investing and managing the money over time. The fund generally needs to

distribute a certain portion of its net assets to DGRs each year.

Investment property owners

If you do not have one already, a depreciation schedule is a report that helps you calculate deductions for the natural wear and tear over time on your investment property. Depending on your property, it might help to maximise your deductions.

Risks

Work from home expenses

Working from home is a normal part of life for many workers, and while you can't claim the cost of your morning coffee, biscuits or toilet paper (seriously, people have tried), you can claim certain additional expenses you incur. But, work from home expenses are an area of ATO scrutiny.

There are two methods of claiming your work from home expenses; the short-cut method, and the actual method.

The short-cut method allows you to claim a fixed 67c rate for every hour you work from home. This covers your energy expenses (electricity and gas), internet expenses, mobile and home phone expenses, and stationery and computer consumables such as ink and paper. To use this method, it's essential that you keep a record of the actual days and times you work from home because the ATO has stated that they will not accept estimates.

The alternative is to claim the actual expenses you have incurred on top of your normal running costs for working from home. You will need copies of your expenses, and your diary for at least 4 continuous weeks that represents your typical work pattern.

Landlords beware

If you own an investment property, a key concept to understand is that you can only claim a deduction for expenses you incurred in the course of earning income. That is, the property needs to be rented or genuinely available for rent to claim the expenses.

Continued over...

Sounds obvious but taxpayers claiming investment property expenses when the property was being used by family or friends, taken off the market for some reason or listed for an unreasonable rental rate, is a major focus for the ATO, particularly if your property is in a holiday hotspot.

There are a series of issues the ATO is actively pursuing this tax season. These include:

- **Refinancing and redrawing loans** – you can normally claim interest on the amount borrowed for the rental property as a deduction. However, where any part of the loan relates to personal expenses, or where part of the loan has been refinanced to free up cash for your personal needs (school fees, holidays etc.), then the loan expenses need to be apportioned and only that portion that relates to the rental property can be claimed. The ATO matches data from financial institutions to identify taxpayers who are claiming more than they should for interest expenses.
- **The difference between repairs and maintenance and capital improvements.** While repairs and maintenance can often be claimed immediately, a deduction for capital works is generally spread over a number of years. Repairs and maintenance expenses must relate directly to the wear and tear resulting from the property being rented out and generally involve restoring the property back to its previous state, for example, replacing damaged palings of a fence. You cannot claim repairs required when you first purchased the property. Capital works however, such as structural improvements to the property, are normally deducted at 2.5% of the construction cost for 40 years from the date construction was completed. Where you replace an entire asset, like a hot water system, this is a depreciating asset and the deduction is claimed over time (different rates and time periods apply to different assets).
- **Co-owned property** – rental income and expenses must normally be claimed according to your legal interest in the property. Joint tenant owners must claim 50% of the expenses and income, and tenants in common according to their legal ownership percentage. It does not matter who actually paid for the expenses.

Gig economy income

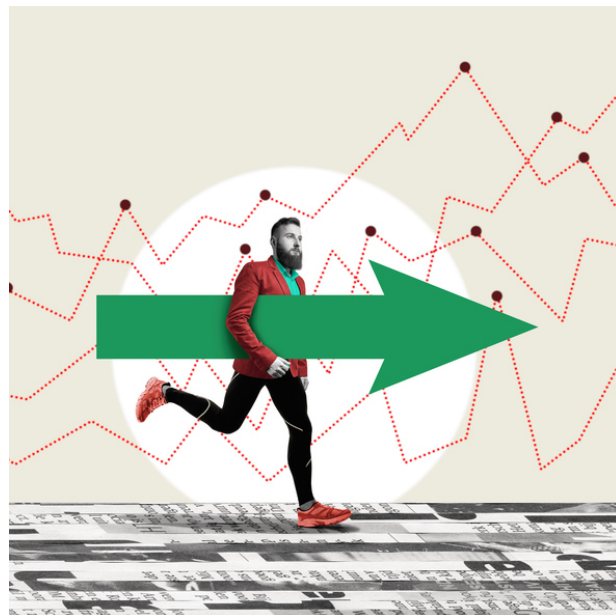
It's essential that any income (including money, appearance fees, and 'gifts') earned from platforms

such as Airbnb, Stayz, Uber, OnlyFans, youtube, etc., is declared in your tax return.

The tax rules consider that you have earned the income "as soon as it is applied or dealt with in any way on your behalf or as you direct". If you are a content creator for example, this is when your account is credited, not when you direct the money to be paid to your personal or business account. Squirrelling it away from the ATO in your platform account won't protect you from paying tax on it.

Since 1 July 2023, the platforms delivering ride-sourcing, taxi travel, and short-term accommodation (under 90 days), have been required to report transactions made through their platform to the ATO under the sharing economy reporting regime. This is the first year that the ATO will have the income tax returns of taxpayers to match to this data.

All other sharing economy platforms will be required to start reporting from 1 July 2024. If you have income you have not declared, do it now before the ATO discover it and apply penalties and interest.



For your business

Opportunities

Bonus deductions

There are a series of bonus deductions available to

Continued over...

Continued from page 3...

small business in 2023-24, these include the instant asset write-off, energy incentive, and the skills and training boost.

Announced in the 2023-24 Federal Budget, the increase to the instant asset write-off threshold enables small businesses with an aggregated turnover of less than \$10 million to immediately deduct the full cost of eligible depreciating assets costing less than \$20,000. In the 2024-25 Federal Budget, the Government extended this measure to 30 June 2025.

Without these measures, the instant asset write-off threshold would be \$1,000.

However, legislation to enact the 2023-24 measure has not passed Parliament following a disagreement between the House of Representatives and the Senate about the amount of the threshold, and whether the measure should apply to medium businesses as well (up to \$50m).

Similarly, the \$20,000 energy incentive that provides an additional 20% deduction on the cost of eligible depreciating assets or improvements to existing depreciating assets that support electrification and more efficient use of energy in 2023-24, is not yet law.

Assuming both measures pass Parliament by 30 June 2024, any assets need to be first used or installed ready for use, or the improvement costs incurred, between 1 July 2023 and 30 June 2024 to be written off in 2023-24.

What is certain is the bonus 20% deduction for eligible expenditure for external training provided to your employees. The 'skills and training boost' is available to businesses with an aggregated annual turnover of less than \$50 million. To claim the boost, the training needs to have been provided by a registered training provider and registered and paid for between 29 March 2022 and 30 June 2024.

Typically, this is vocational training to learn a trade or courses that count towards a qualification rather than professional development.

Write-off bad debts

Your customer definitely not going to pay you? If all attempts have failed, the debt can be written off by 30 June. Ensure you document the bad debt on your debtor's ledger or with a minute.

Obsolete plant & equipment

If your business has obsolete plant and equipment sitting on your depreciation schedule, instead of depreciating a small amount each year, scrap it and write it off before 30 June.

For companies

If it makes sense to do so, bring forward tax deductions by committing to directors' fees and employee bonuses (by resolution), and paying June quarter super contributions in June.

Risks

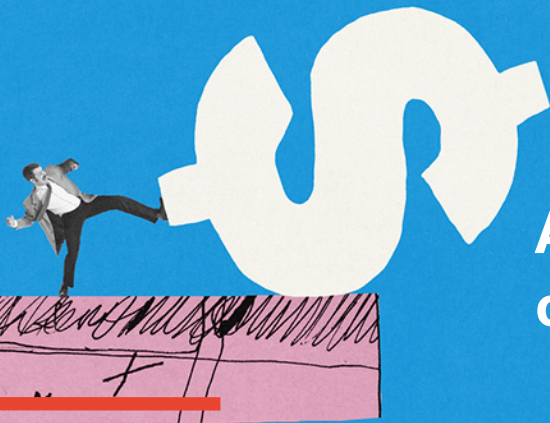
Tax debt and not meeting reporting obligations

Failing to lodge returns is a huge 'red flag' for the ATO that something is wrong in the business. Not lodging a tax return will not stop the debt escalating because the ATO has the power to simply issue an assessment of what they think your business owes. If your business is having trouble meeting its tax or reporting obligations, we can assist by working with the ATO on your behalf.

Professional firm profits

For professional services firms – architects, lawyers, accountants, etc., - the ATO is actively reviewing how profits flow through to the professionals involved, looking to see whether structures are in place to divert income to reduce the tax they would be expected to pay. Where professionals are not appropriately rewarded for the services they provide to the business, or they receive a reward which is substantially less than the value of those services, the ATO is likely to take action.

Need support or have questions? Talk to us today about maximising your outcomes and reducing your risks.



ATO fires warning shot on trust distributions

The ATO has warned that it is looking closely at how trusts distribute income and to who.

The way in which trusts distribute income has come under intense scrutiny in recent years. Trust distribution arrangements need to be carefully considered by trustees before taking steps to appoint or distribute income to beneficiaries.

What does your trust deed say?

An area of concern is that trustees are not considering the trust deed before income is appointed. The answer to what the trust can do, and who it can allocate income to and how, is normally in the trust deed. This should be your first point of call.

Review your deed

- Conduct a review of the trust deed and any amendments to ensure trustees are making decisions consistent with the terms of the deed;
- **Check the trust vesting date.** The trust deed will specify what happens when the trust vests. If the trust vests, the trustees might be directed to distribute the income and property of the trust to particular beneficiaries. The trustee may no longer have the discretion to decide who to appoint income or capital to;
- **Check who the intended beneficiaries are,** and also keep in mind that some beneficiaries might have different entitlements to income and capital under the trust deed;
- **Timing and requirements for resolutions** - Check the deed for any conditions and requirements for trustee resolutions, including the need to have the resolution in writing and the timing of when it's required to be made. For example, the deed might require trustees to take certain actions before 30 June;

- If you are looking to **stream capital gains or franked distributions** to certain beneficiaries, check the trust deed doesn't prevent this and the streaming requirements have been met.

Family trust and interposed entity elections

A family trust election helps wrap the workings of the trust around a specific individual's family group. These elections can help protect trust losses, company losses, and franking credits but can also cause significant tax problems if they are used incorrectly.

An interposed entity election makes an entity a member of the family group of an individual.

Where these elections are in place, it is essential that trustees understand the implications before making any decisions on distributions. Distributions of trust income outside the specified individual's family group will trigger family trust distribution tax at penalty rates.

Who receives the benefit?

The ATO is also on the lookout for arrangements where amounts are allocated or appointed to beneficiaries, but they don't receive the real financial benefit of the distribution. If the arrangement has the effect of reducing the overall tax paid on the income of the trust, then this will normally increase the level of risk involved and attract the ATO's attention.

Continued from page 5...

Increased reporting on tax returns

Changes have been made to capture more information on the tax return about how trusts distribute income. These include:

- **Trust tax return** – four new capital gains tax labels have been added. This information should be provided to beneficiaries to match what is reported in their returns.
- **Beneficiaries** – all beneficiaries of trust income will be required to lodge a new trust income schedule. This schedule should align to your distributions as set out in the trust's statement of distribution.

Trusts can be an excellent vehicle for many reasons including the flexibility to determine how income is distributed. The cost of that flexibility is strong controls and compliance.

The ATO is increasingly strident about how trusts are distributing income, and the tax impact of those distributions. It's important for trustees to get it right because if trust distributions are found to be invalid, the tax ramifications can be significant.

-End-

5 million+ struggle with mortgage payments

New nationwide research released by ASIC's Moneysmart reveals that 47% of Australian adults with debt, the equivalent of 5.8 million people, have struggled to make repayments in the last 12 months.

Alarming, the research revealed that more than half surveyed, said they are not aware that they are entitled to ask their bank or lender for financial hardship assistance and just one in five said they had ever sought financial hardship assistance. Around 30% also stated that they would not seek a hardship assistance arrangement from their bank or lender and instead sell assets or get a second job rather than talking to their bank.

What's changing on 1 July 2024?

Here's a summary of the key changes coming into effect on 1 July 2024:

- Tax cuts reduce personal income tax rates and change the thresholds.
- Superannuation guarantee increases from 11% to 11.5% - check the impact on any salary package arrangements.
- Superannuation caps increase from \$27,500 to \$30,000 for concessional super contributions and from \$110,000 to \$120,000 for non-concessional contributions.
- Luxury car tax threshold increases to \$91,387 for fuel-efficient vehicles and \$80,567 for all others.
- Car limit for depreciation increases to \$69,674.
- \$300 energy relief credit for households comes into effect (credited automatically quarterly).

For business

- \$325 energy relief credit for small business commences (for small businesses that meet the relevant State or Territory definition of a '[small customer](#)').
- \$20k instant asset write-off extended to 30 June 2025 (subject to the passage of legislation).

Quote of the month

"Nothing in life is to be feared, it is only to be understood. Now is the time to understand more, so that we may fear less."

*Marie Curie, Physicist, chemist,
Nobel Prize laureate*

Changes are coming to XERO

We're letting you know about the launch of a new line-up of plans for Xero's customers, as well as changes to pricing for current Xero subscriptions.

From **1 July 2024**, Xero is launching three new streamlined business plans (**Ignite**, **Grow** and **Comprehensive**) and enhancing the **Ultimate plan**.

These new plans are designed to provide you with easier access to the tools to help run your business efficiently.

The new plans will replace Xero's Payroll Only, Starter, Standard and Premium plans.

In addition, Xero will convert all Premium 10-100 plans to Ultimate plans on 1 July 2024.

PRICE CHANGES

From **1 July 2024**, the prices for the current business plans are increasing as follows:

Plan	Old Price	New Price	New Plan
Starter	\$32.00	\$35.00	Ignite
Standard	\$65.00	\$70.00	Grow
Premium 5	\$85.00	\$90.00	Comprehensive
Ultimate 10	\$99.00	\$115.00	Ultimate 10
Ultimate 20	\$125.00	\$145.00	Ultimate 20
Ultimate 50	\$170.00	\$200.00	Ultimate 50
Ultimate 100	\$205.00	\$245.00	Ultimate 100

